



Using UniSA Virtual Desktops

Go to:

[Connecting to a Virtual Desktop](#)

[Using a Virtual Desktop](#) (includes [Connecting USB Devices](#))

[Disconnecting from a Virtual Desktop](#)



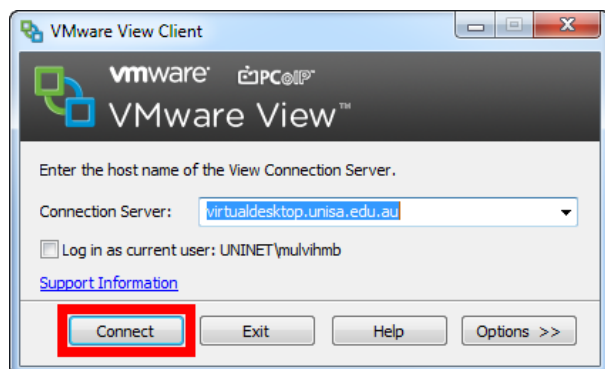
Alert: These instructions assume the Virtual Desktop Infrastructure (VDI) Client 'VMware View Client' is installed on the device. To install the VDI Client please refer to the [Installing VDI Client](#) user guide.

Connecting to a UniSA Virtual Desktop

Step 1: Open the VDI Client: **VMware View Client**.

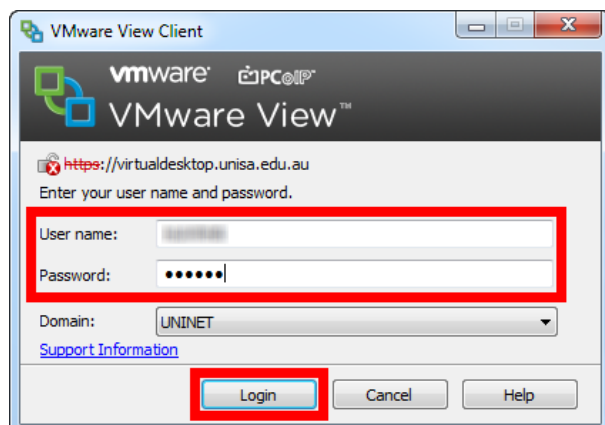


Step 2: Select the **Connect** button.

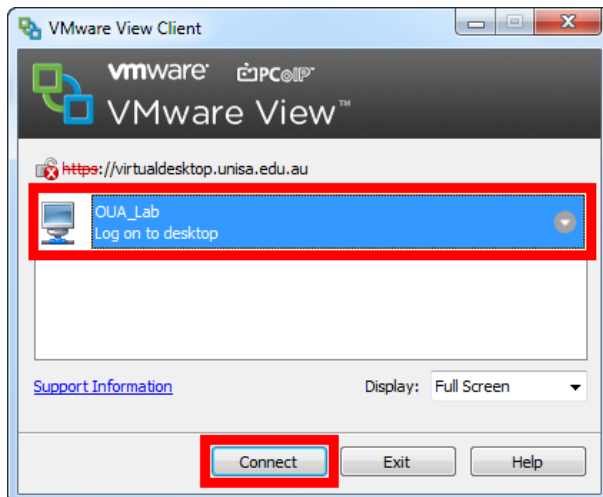


If the Default Connection Server was not entered when installing the VDI Client you will need to type: `virtualdesktop.edu.au` in the Connection Server field prior to selecting the Connect button.

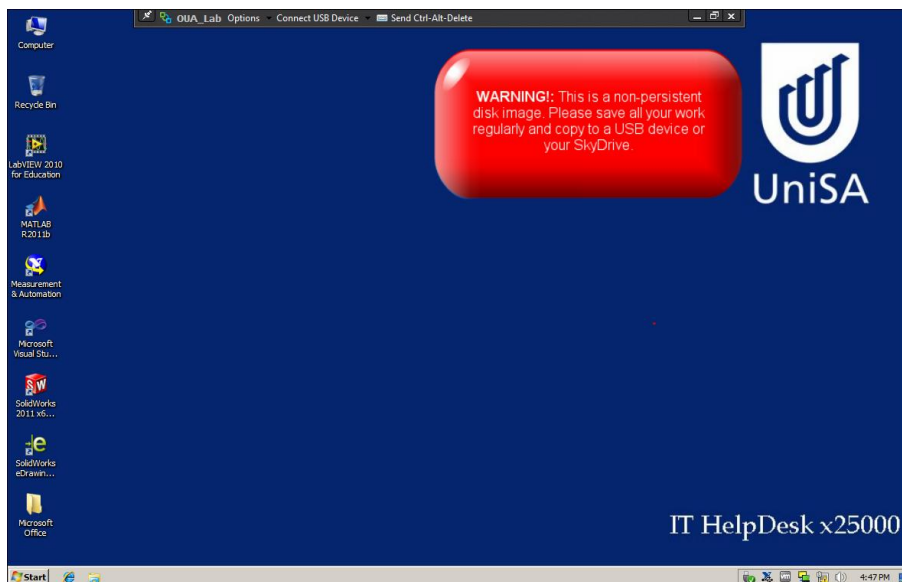
Step 3: Enter your **UniSA Username and Password**, and select the **Login** button.



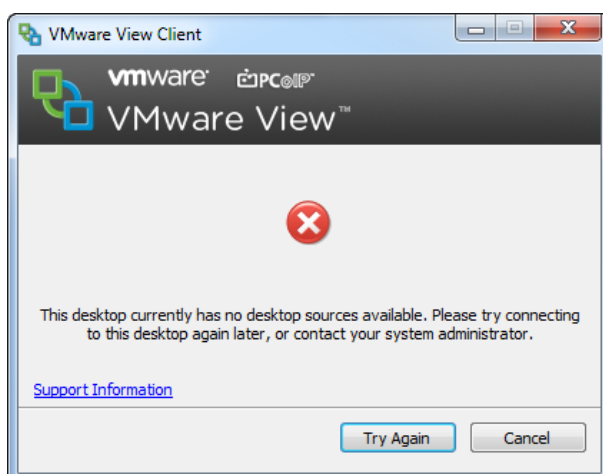
Step 4: Select the **VDI Pool** you want to connect to (if more than one VDI Pool is displayed), then select the **Connect** button.



You will be connected to a virtual desktop within the selected VDI Pool (lab), and will have access to all software and applications installed on the virtual desktop (see screen image below).



If all virtual desktops within the selected VDI Pool (lab) are already connected to other users, a warning message will advise that there are no virtual desktop sources available, and you will need to try again later to connect to a virtual desktop (see message below).



Using UniSA Virtual Desktop

Note 1: All work must be saved to your SkyDrive or a local storage device such as a USB.

- Do not save work or files of any kind to the virtual desktop
- Files saved to a virtual desktop are deleted when the next user connects to the desktop (cannot be recovered)

Note 2: The VDI Client will not automatically connect USB devices by default, therefore you must either:

- Configure the desktop session to automatically connect USB devices; or
- Manually connect the USB device to the virtual desktop session

Refer to the [Connecting USB Devices](#) topic for further instructions.

Note 3: There are a limited number of virtual desktops within a VDI Pool, so please follow these simple steps to maximise the availability of virtual desktops:

- Only connect to a virtual desktop to access applications not installed on your current device; do not connect to a virtual desktop if you can use your local device to complete the task(s)
- Disconnect from the virtual desktop as soon as you finish using the applications not installed on your device

Connecting USB Devices



Alert: Your local device is unable to access USBs while they are connected to the VDI. If you minimise your VDI session, your local device will not be able to access (will not display) USBs that are still connected to the minimised VDI session.

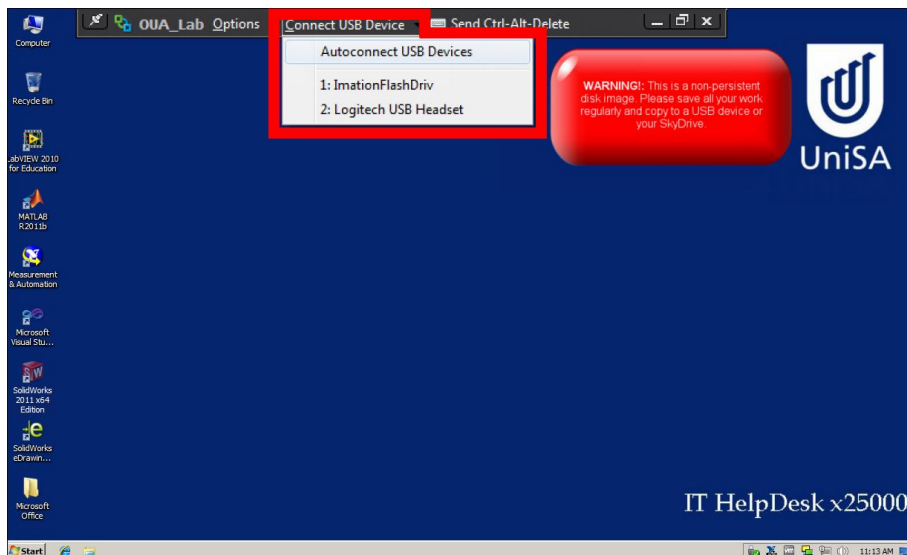
Step 1: In the VDI Client toolbar, select the **Connect USB Device** option, and then select either.

- **Autoconnect USB Devices:** The **USB** you want to save to is **not** currently connected to your local device.

The virtual desktop will automatically connect to USB devices connected to your local device after this option is selected.

- **[Specific USB Device]:** The **USB** you want to save to is **currently** connected to your local device.

The virtual desktop will connect to the selected USB device (only USB devices already connected to your local device will be displayed).

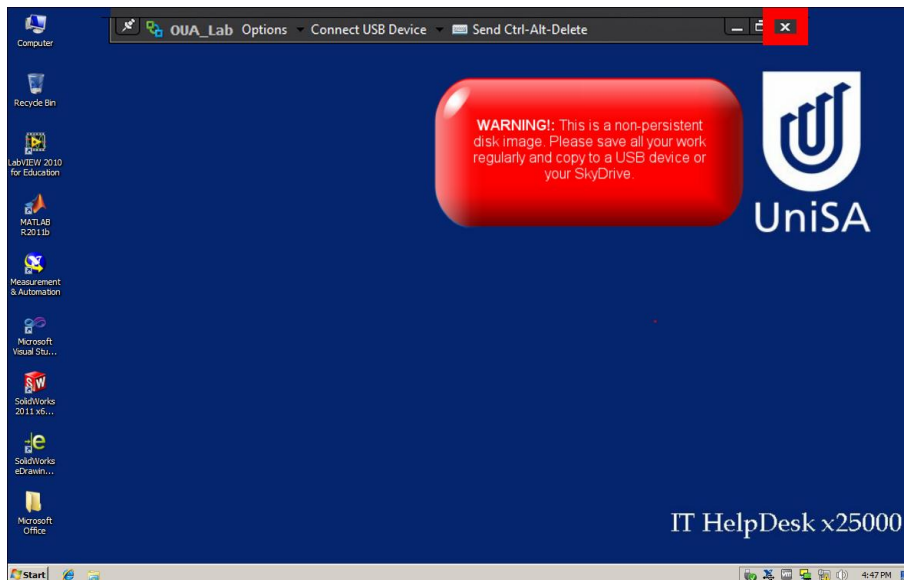


Disconnecting from a Virtual Desktop

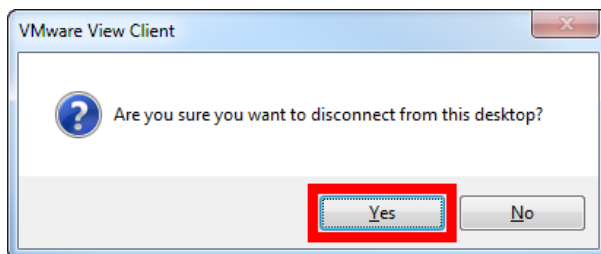


Alert: Before disconnecting from the virtual desktop please ensure you have saved all work to your SkyDrive or other local storage device such as a USB. Any files saved to the virtual desktop will be deleted when you disconnect from the virtual desktop.

Step 1: After saving your work external to the virtual desktop, select the **Close** button (X) to disconnect from the virtual desktop.



Step 2: Select the **Yes** button.



You will be disconnected from the UniSA virtual desktop and returned to your device's operating system.