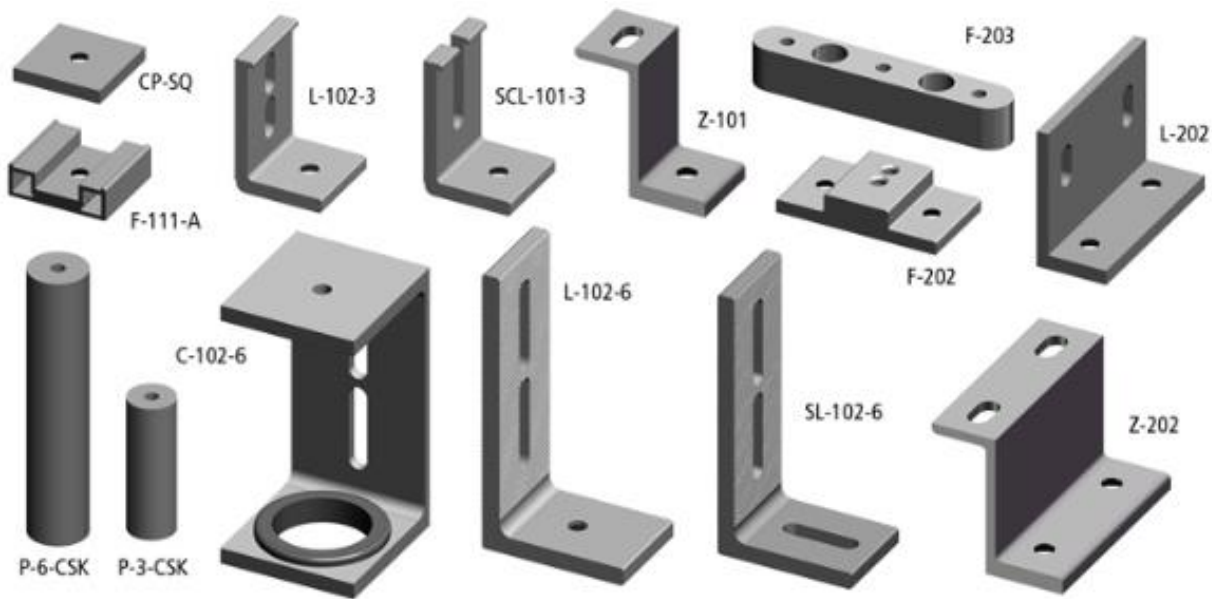


Choice of frames/brackets

- Lightweight
- Easy to process
- Easy to assembly
- Cost effective

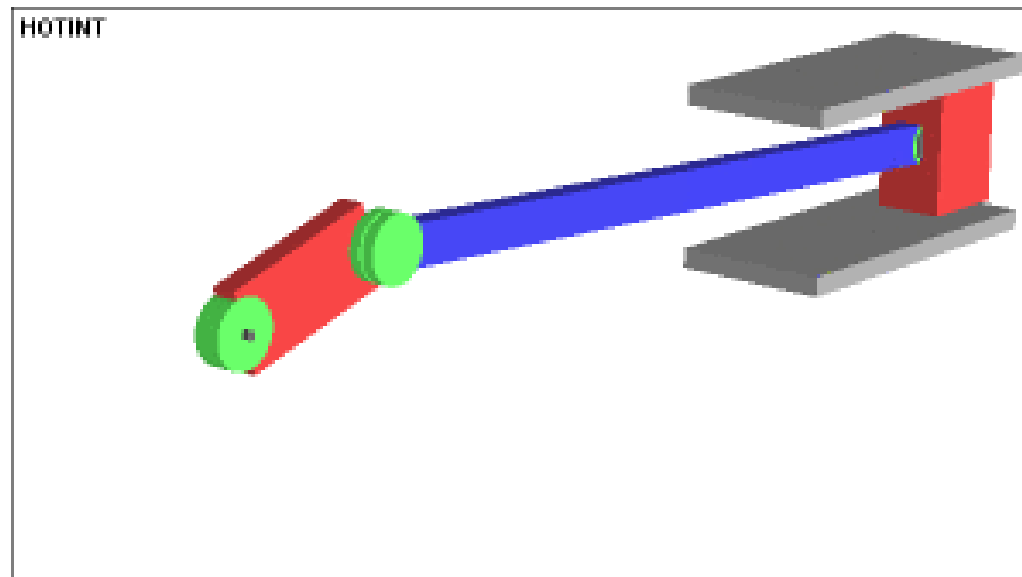


- Choice of stiffness depends on
- Applied load
 - Torque
 - Static or dynamic loading
 - Rotation or linear

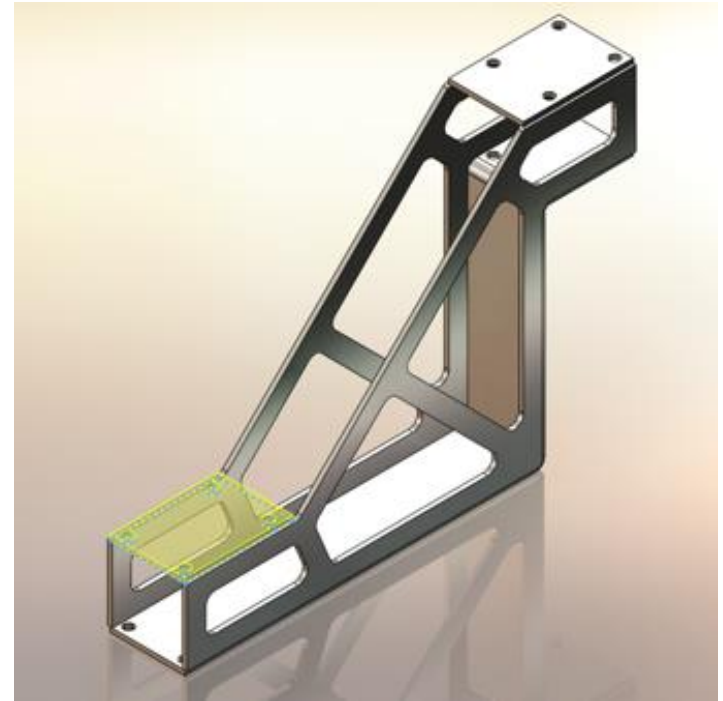
For example – a rotating arm subject to acceleration with repeated cycles

Design of arm – Solid structure – **Bad choice**

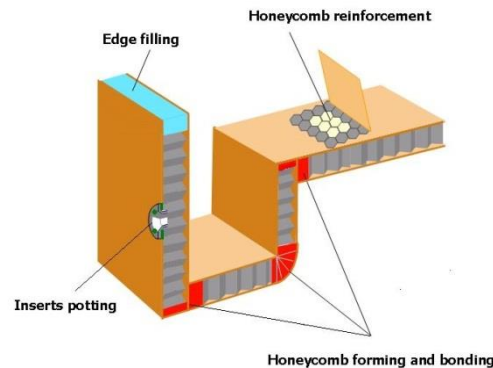
Hollow or I-beam – **good choice**



Choosing frames and structures



Sheet metal structure
Lightweight material
Drilled holes



www.chiefdelphi.com

Honeycomb structure