

Installing the VDI Client on an External (non-University) Windows Device



Alert: These instructions are specific to installing Version 5.1.0 of the Virtual Desktop Infrastructure (VDI) Client on a Windows device. To install the VDI Client on a non-Windows device please refer to the 'Installing the VDI Client on a Non-Windows Device' user guide.

Instructions

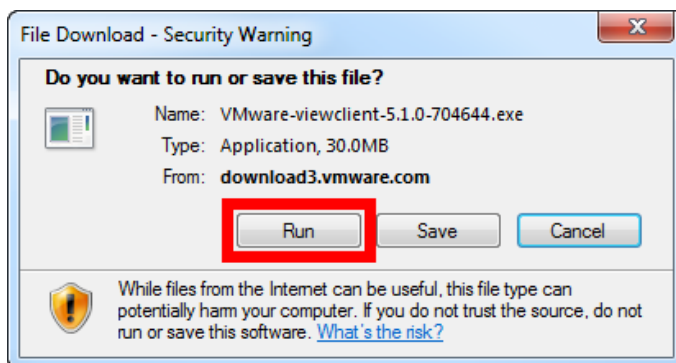
Step 1: Select the relevant Download link below for your system type:

[Download VMware View Client for 32-bit Windows](#)

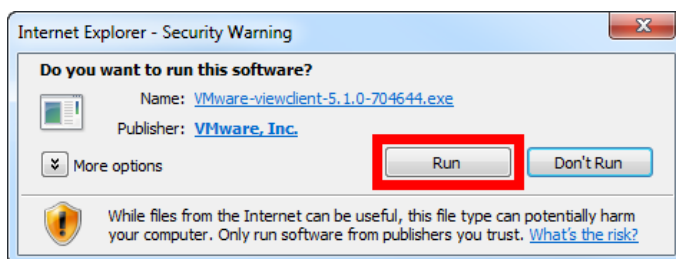
[Download VMware View Client for 64-bit Windows](#)

If you are not sure if you are running the 32-bit or 64-bit version of Windows please see the [Further Information](#) section at the end of this document.

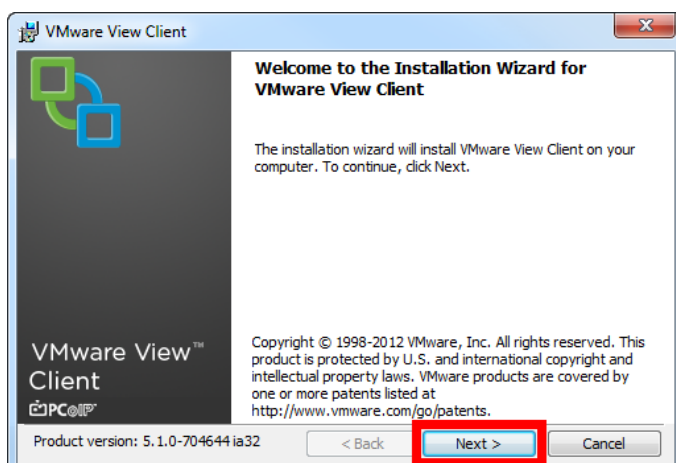
Step 2: Select the **Run** button.



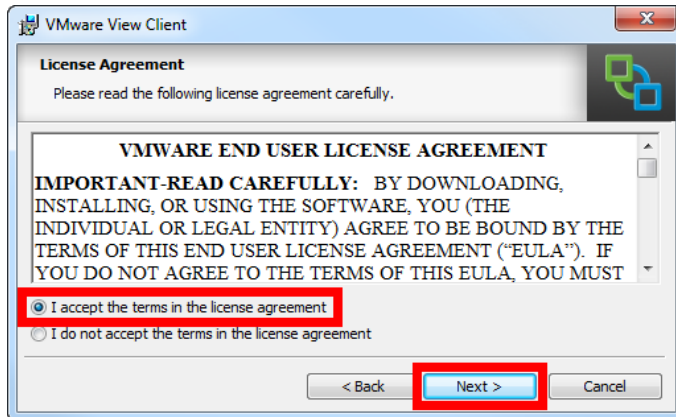
Step 3: Select the **Run** button.



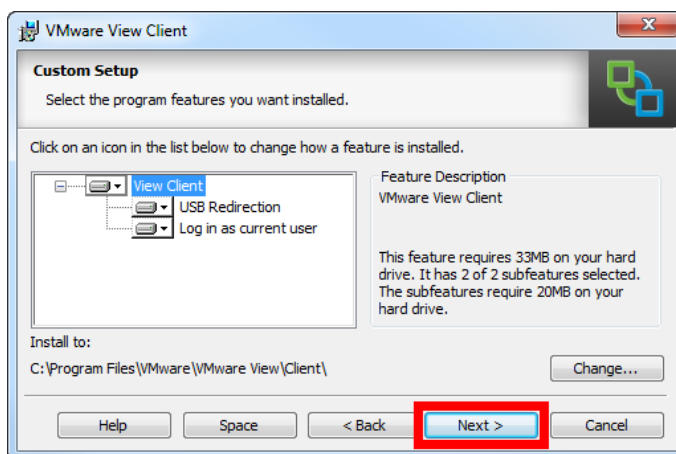
Step 4: Select the **Next** button.



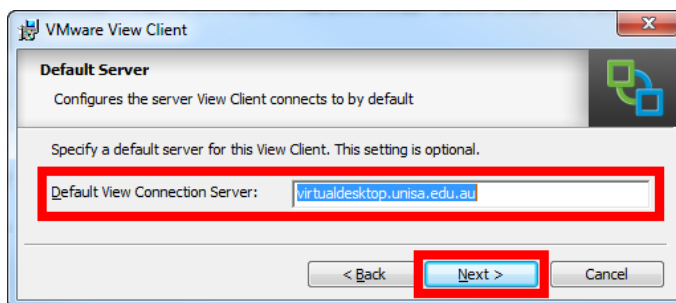
Step 5: Read the End User Licence Agreement, select the **I accept the terms in the licence agreement** option, then select the **Next** button.



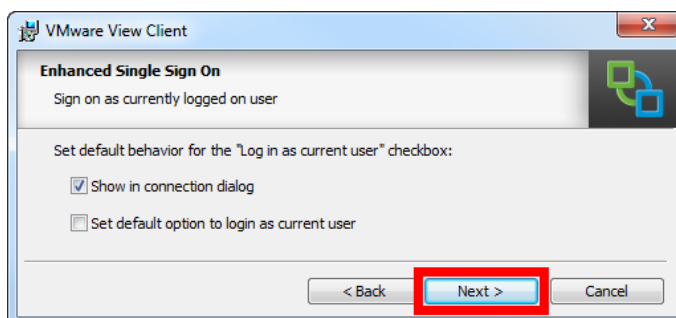
Step 6: Select the **Next** button.



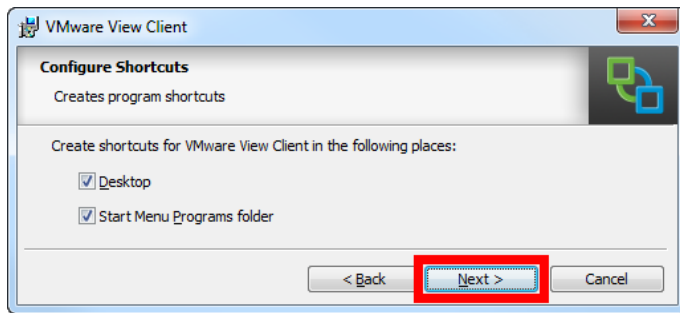
Step 7: Enter the Default View Connection Server: **virtualdesktop.unisa.edu.au** then select the **Next** button.



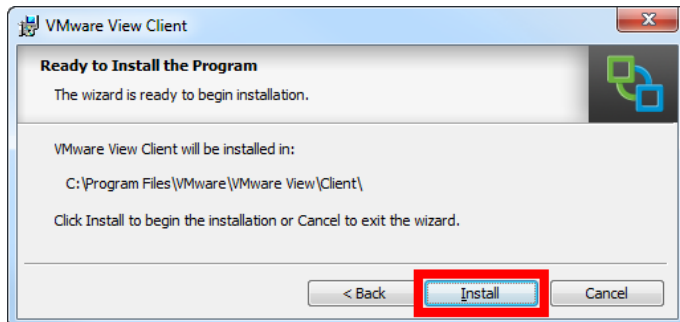
Step 8: Select the **Next** button.



Step 9: Select the **Next** button.

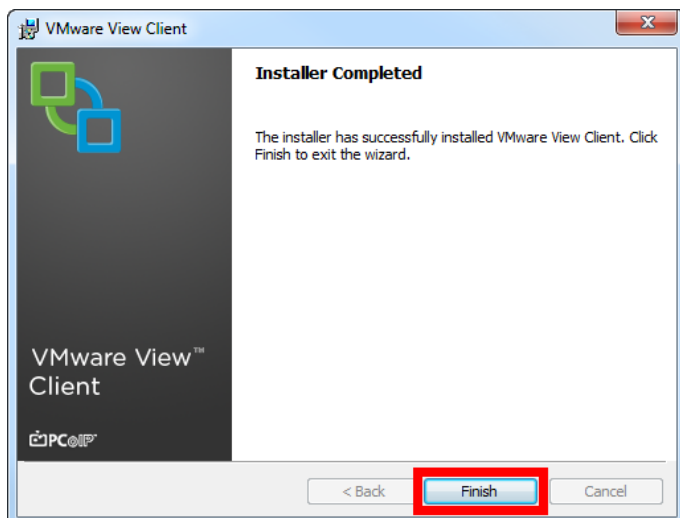


Step 10: Select the **Install** button.

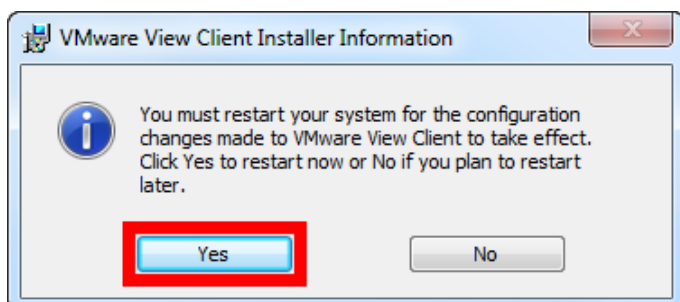


The VMware View Client will commence downloading.

Step 11: Once the installation process is complete, select the **Finish** button.



Step 12: Close all other applications you are running, then select the **Yes** button to restart your device.



After restarting your device you can open the VDI Client (VMware View Client) and connect to a UniSA virtual desktop.

Further Information

How to determine if your device is running the 32-bit or 64-bit version of Windows

Windows XP:

Click **Start**, right-click **My Computer**, and then click **Properties**:

- If the **System** field displays 'x64 Edition', the device is running the 64-bit version of Windows XP
- If the **System** field does not display 'x64 Edition', the device is running the 32-bit version of Windows XP

Windows 7 or Windows Vista:

Click the **Start** button, right-click **Computer**, and then click **Properties**:

- If the **System Type** field displays '64-bit Operating System', the device is running the 64-bit version of Windows 7 or Windows Vista
- If the **System Type** field does not display 'x64 Edition', your device is running the 32-bit version of Windows 7 or Windows Vista